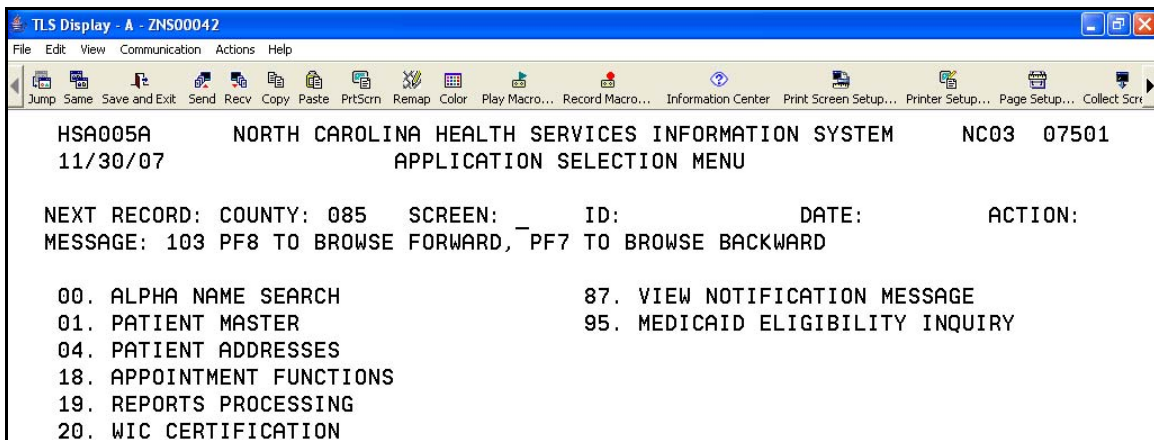

Ending HSIS and CICS Sessions

When a WIC user is not at the computer, the system should be locked and HSIS, CICSNC and Host On-Demand must be exited correctly so that no unauthorized access is allowed.

Proper Exit Procedures for HSIS, CICS and Host On-Demand

Adhere to the following exact order to properly exit out of HSIS, CICS and Host On-Demand:

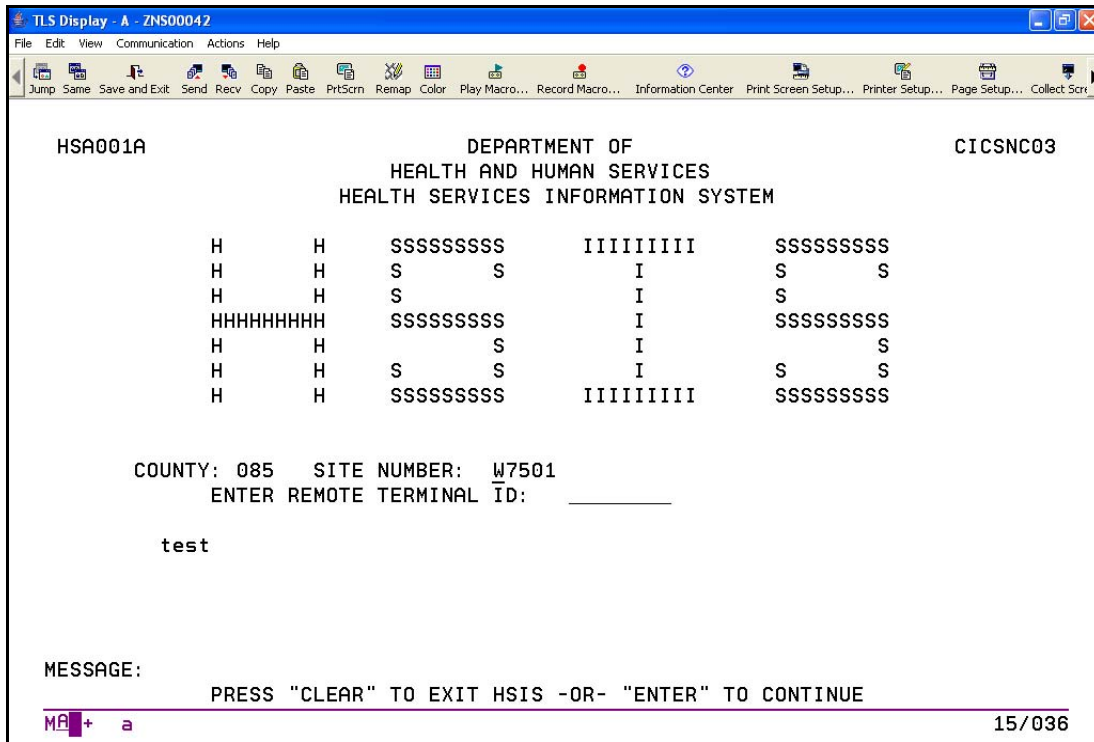
1. Press the <F2> key to back out of all HSIS (WIC ADP) screens and return to the Main Application Selection Menu.



2. Press the <F1> key to properly exit out of HSIS, back to the HSIS banner/login screen.



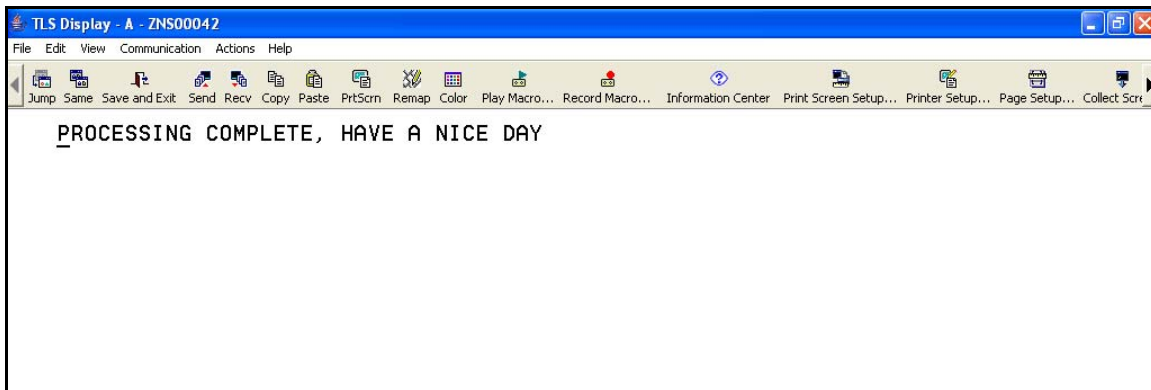
Chapter 1: USING THE HEALTH SERVICES INFORMATION SYSTEM (HSIS)
Section 7: ENDING HSIS AND CICS SESSIONS



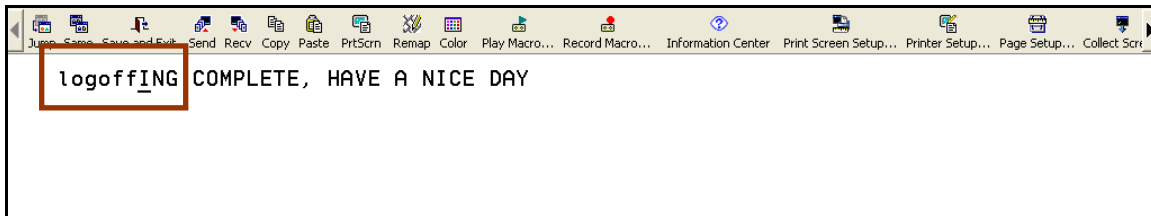
3. Press the <Pause/Break> or the <Esc> key on the keyboard.



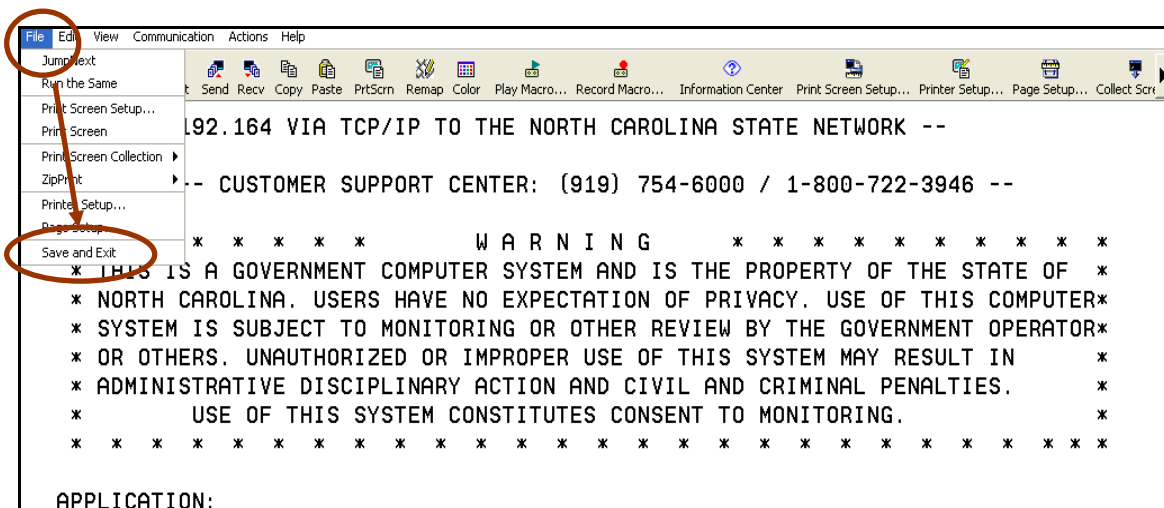
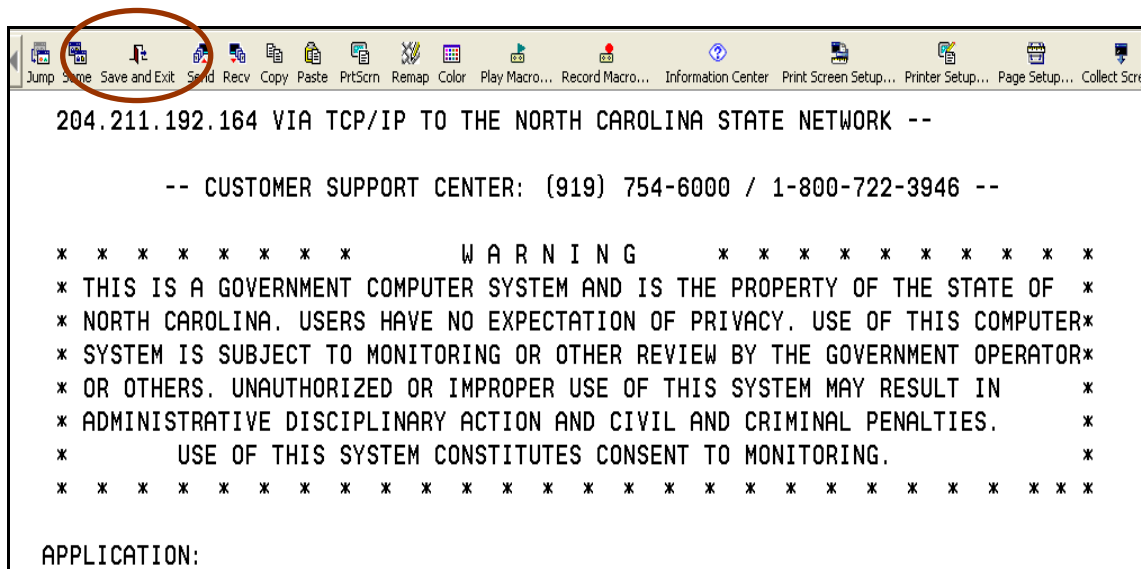
4. The system should display the message Processing Complete, Have a Nice Day.



5. Type the word Logoff (right over the word processing) and press the **ENTER** key to properly exit out of CICS and return to the NC State Network application entry screen.



6. Press the Save and Exit button OR select the Save and Exit option from the menu to properly exit out of Host On-Demand. This should only be done after properly exiting out of HSIS and CICSNC25.



Summary

